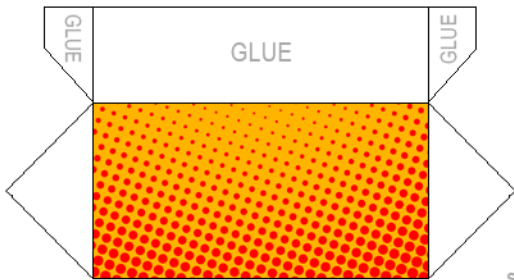


### BOTTOM INSIDE RAMP

Glue to the bottom of the inside BACK wall of the tower (so the ramp slopes down towards the opening in the tower)



### TOP INSIDE RAMP

Glue to top of the inside FRONT wall of the tower (so the ramp slopes down towards the back of the tower)

NOTE: the higher you glue this to the wall of the tower, the faster the dice will come out of the opening. Gluing it so it's about 1-in from the top of the tower seems optimal.

Suggestion for order of gluing for the tray:

- 1) glue the flaps on the long sides to the short sides.
- 2) fold over the short sides and glue them down.
- 3) glue the flaps on the short sides to the long sides
- 4) fold over the long sides and glue them down.

